



*bcpcb*f - THE CANCER FOUNDATION



about us

Cancer has recently overtaken heart disease as a leading cause of death worldwide. Global cancer burden of 18.1 million new cases every year, out of which 9.6 million die (GLOBOCAN IARC 2018) Signifies enormity of this challenge. Closer home 1.1 million new cases every year out of which 7.84 million die echoes the looming epidemic in India as well (ICMR 2018). Support groups are doing a yeoman's service in trying to increase awareness and provide education and counseling. Our treatment centers are inundated and professionals grappling to provide optimal care. But the harsh reality is, that despite these facilities, a number of patients have no access to world-class treatment.

Science tries to keep abreast of infirmity. Global efforts towards research, technological advances, financial availability and concern for the afflicted, exhibit heterogeneity. The crux of the problem remains inadequate finances for developing multimodality treatment of acceptable standards and protocols.

This is what motivated a small group of professionals, patients and corporates to act, rather than just discuss the problem and set up **bcpbf - THE CANCER FOUNDATION**

Founded by **Dr. Sameer Kaul** in September 2004, the BCPBF is an equal opportunity support organization which, in the interim, comprises of well-known medical professionals, financial experts, entrepreneurs, gutsy survivors and philanthropic members of the community. Its sole purpose is to financially benefit those who cannot afford the treatment and to increase knowledge among those unaware of the disease, by reaching out to them through its programmes like 'Knowledge at your doorstep' awareness camps, public lectures, seminars, corporate health checks and other such events. The foundation also aims to motivate the affluent strata of society to contribute towards the noble cause at fundraising events.



primary OBJECTIVES

To subsidize the mammoth cost of treatment of Cancer of needy and poor patients and raise funds for the same.

To help early detection of cancer and to raise funds for the said purpose.

To set up detection centers, hospitals, nuclear science and pathological labs and radiation/ chemotherapy centers in rural and urban areas for treatment of cancer patients and raise funds for the same

To convince pharmaceutical companies to provide drugs for cancer treatment at concession rate/free of charge for poor and needy patients



21500+
People Screened



660+
Financially Assisted



256+
Provided Free Medicine

meet FOUNDER MEMBERS



DR. SAMEER KAUL, President

He is the Founder & President of the Breast Cancer Patients Benefit Foundation (BCPBF) in India and since over 15 years, he has been organizing regular cancer camps to bring early detection and treatment to patients who can't reach out to hospitals. He is a national level spokesperson for global health issues like the Anti-Tobacco campaign and Breast Cancer Awareness. Many conferences, medical journals & studies stand by his name.

DR. FEROS PASHA, Treasurer

Dr. Feroz Pasha graduated from Calcutta national medical college, Calcutta and thereafter joined the army medical college. He did his post graduation in surgery from army hospital, New Delhi. He is at present Sr. Consultant Surgical Oncology in Apollo Cancer Institute New Delhi. His field of interest is in Onco – Gynaecology and G I cancer surgery. He has a special interest in central venous access devices on which he has numerous papers.



MRIDUL ARORA, General Secretary

She is a multi-dimensional professional with degrees in Literature, Textiles and Fashion, Computer aided designing. Her work involves Business Development, Fund Raising, organizing National & International Medical Conferences, free Medical Camps, Pharmaceutical and Biotech Corporate Communications.

DR. DEEPA KAPOOR, Member

She is a core member of our team at bcpbf-The Cancer Foundation. Delhi Commonwealth Women's Association, – Medical center, Pre nursery and Special Needs, Training programs for Hospitals, Industry and NGOs. Conducting Workshops on stress management, effective interpersonal relationships, cancer awareness, etc. External Examiner and visiting lecturer, Amity University Member, bcpbf-The Cancer Foundation, Cancer Patients Aid Association, SOS villages, Indian Cancer Society, CanKids, Cansupport, Cancer Sahyog.



DR. SHAHIN NOOREYEZDAN, Member

Dr Shahin Sheriar Nooreyezdan was born to Baha'i parents on 11th October 1961 in Mumbai. He underwent his schooling at St Peter's School, followed by Junior College at Kishinchand Chellaram College, Mumbai. From Gajra Raja Medical College, Gwalior graduated with his MBBS degree in 1984. In 1988 completed his training with a Master of Surgery degree. He was awarded his M. Ch. degree in Plastic Surgery from PGIMER in 1992, after which he went to the U.K., where he worked at the Regional Burns and Hand Surgery Unit at St Andrew's Hospital, Billericay.

SUMEET NAIR, Member

Sumeet Nair did his schooling from Cathedral and John Connon School, Bombay and went on to graduate in Economics from Stanford University, California, USA in 1991. On his return to India in December 1992, he established Black Eye Design, apparel and home furnishings export house. Recognizing the urgent need to organize the Indian Fashion business under a formal structure, Sumeet initiated the process of setting up a nodal agency. His efforts bore fruit in 1998, when Fashion Design Council of India (FDCI) was formed with front running professionals of the fashion industry. Sumeet was appointed the Executive Director of the FDCI.



Central Drug Repository



Patients Assistance Programme



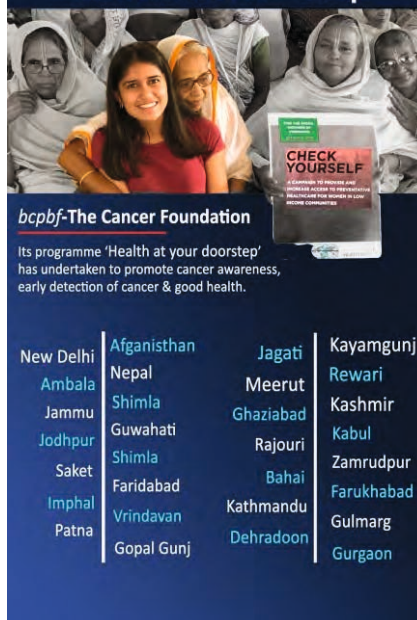
Conferences



Public Awareness Lectures



Cancer Detection Camp



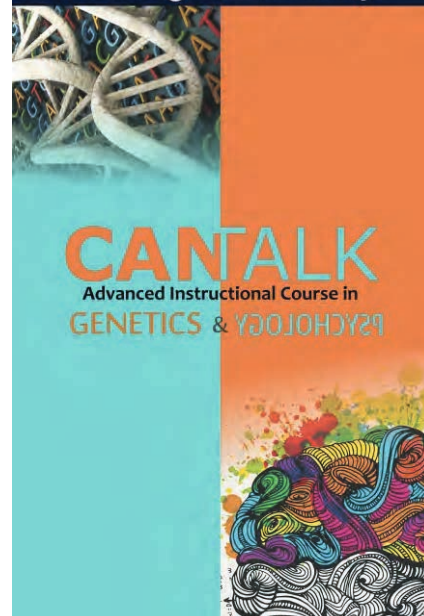
Fundraiser



Continuing Medical Education



Training And Workshop



WORK DONE

since inception

CENTRAL DRUG REPOSITORY

Patients Benefitted **256+**
Distributed Drugs Worth **Rs.2.38 Crores**

The BCPBF's most vital program is 'CENTRAL DRUG REPOSITORY', an honest attempt at providing subsidized / free lifesaving cancer drugs to "Below Poverty Line" patients, we collect these medicines With the help of well meaning individuals, corporate and pharmaceutical companies.

PATIENTS ASSISTANCE PROGRAM

Patients Benefitted **660+**
Rs.2.7 Crores

These funds are being used to provide timely subsidized / free treatment to ill affording cancer patients cutting across red tape, caste, color and creed. So far 660 patients have received aid worth Rs. 2.7 Crore.

ERADICATE CANCER

65 CAMPS
20 Cities **11** States **3** Countries
21500+ Preventive Checkups

Free cancer detection and awareness checkups were organized at various organisations Maitri, Masonic Womens' Club, Delhi Commonwealth Women's Association, Tata Consultancy Services, IJ Public School, Bahai Temple, Apna Hospital, Kashmir Nursing Home, Home help & Manual Labor class of Moti Bagh -Delhi, City Hospital -Ambala, Digamber Jain Dharamshala, - Kampil, Shija Hospital, Imphal (Manipur), Manual Labor class of Gurgaon 2009 -15 Haryana, Eradicate Cancer 2012 -Weekly camp for the Rikshaw Pullers, Juggi Cluster Domestic help & Manual Labor of West & North Delhi, Free Camp for Migrants at Jagati, Nagrota, Gopalganj, Sivan (Patna), Wahaj Hospital Kabul, Afghanistan, etc.

Expressing their appreciation and patronage of selfless charitable activities of our foundation, many noted individuals and organizations assist in augmenting resources for our cause. Similarly, many leading cancer specialists of international repute like Dr. S H Advani, Dr. G K Rath, Dr. Vinod Raina, Dr. K S Gopinath, Dr. Ashok Vaid, have been regularly associated with the activities of our organization. Approximately 21400 people have attended our camps.

TRAINING, ACCREDITATION & WORKSHOPS

855 Doctors, Students, Nurses

Our 'Fellowships and Trainings Program' endeavors to train and certify deserving surgeons and physicians.

Emphasis is laid on selective candidates who are likely to return to their hinterland and offer these newly acquired services to their people.

KNOWLEDGE AT YOUR DOORSTEP

Imparts knowledge to concerned professionals at their doorstep, create awareness of this disease amongst the masses, enhancement of early detection capabilities at the grassroots level and appropriate referral to higher centers was achieved by its program 'KNOWLEDGE AT YOUR DOORSTEP' comprise of - **Continuing Medical Education, Conferences, Public Awareness Lectures.**

CONTINUING MEDICAL EDUCATION (CME):

25 CMEs

13

12

3

Cities States Countries

3400

Health Care Providers

Through this program, the foundation promotes interaction between primary physicians, nurses, technicians and cancer specialists. Various CMEs (Continuing Medical Educational) including a series of program entitled Cancer Scenarios 2006, 07, 08, 09, 10, 11, 12, 13, 14, 15, 16, 17, 18, 19' have been conducted for primary physicians and health providers.

CONFERENCES :

In order to emphasize the role of the non-governmental and private sectors in Healthcare delivery, the Foundation organized:

1. **'HIMALYAN CANCER CONGRESS 2008'** at the Intercontinental Hotel, Kabul from 1-3 August 2008 in collaboration with the Afghan Doctors' Association, which was attended by 400 specialists from India, Afghanistan, Pakistan and Turkey
2. **'NATIONAL WORKSHOP ON LIVER CANCER 2010'** at Indraprastha Apollo Hospitals, New Delhi, 2 May 2010, attended by 300 Gastroenterologists, Radiation, Medical & Surgical Oncologist, Radiologists of North East India.
3. **'ONCO-HAEMATOLOGY 2011'** National Seminar at The Lalit Grand Palace, Srinagar, Kashmir, 11 & 12 March 2011, attended by 375 prime Oncologists, Haematologists and General Physicians, Laboratory Medicine, Pathologists and opinion-builders from the medical fraternity of J&K.
4. **'WOMEN & CANCER'** at the Classic Hotel, Imphal, Manipur, 1 & 2 September 2011, attended by 217 Oncologists, Gynaecologists, General Physicians, Surgeons, Radiologists, General Practitioners of North East India, Kolkata, Myanmar and Bangladesh.
5. **'WOMEN & CANCER'** at the Hotel Taj Vivanta, Srinagar, Jammu & Kashmir, 4 & 5 May 2012, attended by 195 Oncologists, Gynaecologists, General Physicians, Surgeons, General Practitioners of Jammu & Kashmir.
6. **'INDO NEPAL CANCER SYMPOSIUM'** at the Hotel Yak & Yeti, Kathmandu, Nepal, 14 Dec 2013, attended by 210 Oncologists, Gynaecologists, General Physicians, Surgeons, General Practitioners of Nepal.
7. **'THE GULMARG DECLARATION'** at the Hotel Khyber, Gulmarg, J&K, 10 Oct 2015 attended by 45 leading Oncologists of India.
8. **'AFFORDABLE CANCER CARE IN INDIA - 2017'** at the Hotel Taj Palace, New Delhi, Nov 2017, attended by 400 Delegates from the Ministry of Health, India, Niti Aayog, ICMR, NPPA, OPPI, Medical Council of India and leading Oncologists from all over the country.
9. **'SEVEN SISTER'S CANCER UPDATE 2019'** at the Hotel Tripura Castle, Shillong, 6 April 2019 attended by 40 leading Oncologists of India.
10. **'MOLECULAR MANAGEMENT OF SOLID TUMORS'** Webinar, Aug 2020

PUBLIC AWARENESS LECTURES :

65 Lectures

21 States
3 Countries

22000+
Awareness Beneficiaries

Public Awareness Lectures were organized for various organisations like Zuari Industries (Goa), Wahaj Hospital Kabul (Afghanistan), Artemis Hospital (Gurgaon), IMA (Dehradun), Tata Consultancy Services (Gurgaon, Noida, Connaught Place) Shija Hospital, Imphal (Manipur), Florence Hospital (Srinagar), Jain Nursing Home, Meerut (U.P), Masonic Club, Delhi Commonwealth Women Association, Hutch, O&M Advertising Agency, CMC, Sun life Insurance, Hotel Hilton, Indian Oil, International Labor Organization, IIT (New Delhi), Amity International University (Greater Noida), Shija Hospital (Imphal), DCWA, Apollo Hospitals.

FUNDRAISERS

The foundation also aims at motivating the higher strata of society to contribute towards the noble cause by conducting fundraising events. 'bcpbf - THE CANCER FOUNDATION' has held the following, very well-attended fundraisers successfully:

1. **'DILKI AWAZ'** held in Dec 2004 featured a display of traditional Indian costumes of Mughal era by distinguished designer Ritu Kumar and soulful rendering of ghazals by the legendary artiste, Ghulam Ali, at the Old Fort, New Delhi. Dr.S.H. Advani, one of our foremost crusaders against breast cancer, was honored with a lifetime achievement award.
2. **'EHSAA'S'** a cultural evening featured 'Junoon', a musical group from Pakistan based in USA and a display of traditional Indian costumes by well-known designer Tarun Tahiliani in Feb 2007, at The Old Fort, New Delhi.
3. **'THE AWAKENING'** a much acclaimed theater presentation "Kaifi Aur Main" rendered by Shabana Azmi and Javed Akhtar. It also included an auction from the haute couture collections of J.J. Valaya and Ritu Kumar and shimmering silk rugs from the looms of Vicky Shaw.
4. **'CREAFASH'** held in December in 2008 at the Hotel Imperial a display and auction of Modern Indian Jewelry designed exclusively with ORRA Diamonds by well-known designer Tarun Tahiliani for the foundation.
5. **'DRAUPADI'** a theater presentation on March 2010 at Kamani Auditorium & Ashoka Hotel included contribution by Anjali Ela Menon, Ritu Kumar, Aman Nath, Shubha Mudgal, Tina Johnson.
6. **SERIES OF 'FRIENDSHIP GOLF TOURNAMENT'** started in 2005 and held every year after that in the last week of Dec.
7. **Play for Life** PS Bedi & Co., a logistic corporate expressed their wish to discharge their social responsibility towards needy cancer afflicted, we welcomed them. Play and have fun. But do it to give someone life, is Vicki Bedi's (scion of this family) brainchild. He has consistently organized this charity match 'Play for Life' annually ever since 2016.

CERTIFICATIONS

bcpbf-THE CANCER FOUNDATION is registered under the Societies Registration Act (XXI) 1860, Govt. of NCT of Delhi. Indian donations shall be exempted from Income Tax under Sec 80(G) of Income Tax Act 1961 as applicable

bcpbf-THE CANCER FOUNDATION is registered under the Foreign Contribution (Regulation) Act 2010, Govt. of India

SUPPORTED BY





***bcpbf* - THE CANCER FOUNDATION**

A-1/132 L.G.F. | Safdarjung Enclave | New Delhi 110029
09811261709 | bcpbf@hotmail.com | www.bcpbf.com

